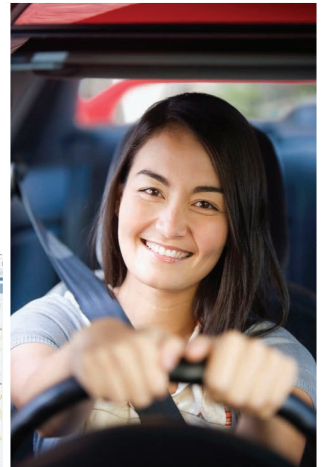
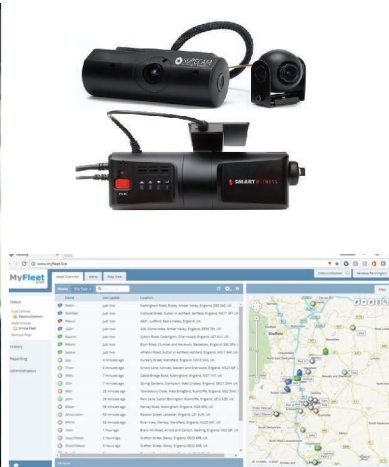




YOUR VEHICLES AND DRIVERS ARE TWO OF YOUR MOST VALUABLE ASSETS

Protect them with the latest technology in vehicle tracking, camera and fleet software solutions



Fleet
Software Solutions

www.fleetsoftwaresolutions.co.uk

Fleet

Software Solutions

Thinking of vehicle tracking or cameras for your fleet....or are you looking for a new supplier?

We are **hardware agnostic** with **over 500 different devices** from the worlds leading manufacturers integrated onto our MyFleet Live system. This includes hardwired black boxes, OBD and cigar lighter plug-ins, CANBus compatible devices and live streaming 3G/4G cameras. In short, **the options are endless!**

You only commit to a **rolling contract of just £9 per vehicle/asset per month** (discounts for volume) - if your fleet changes, we simply increase or decrease the amount you pay. **We can also rebrand our system as yours FOC!**

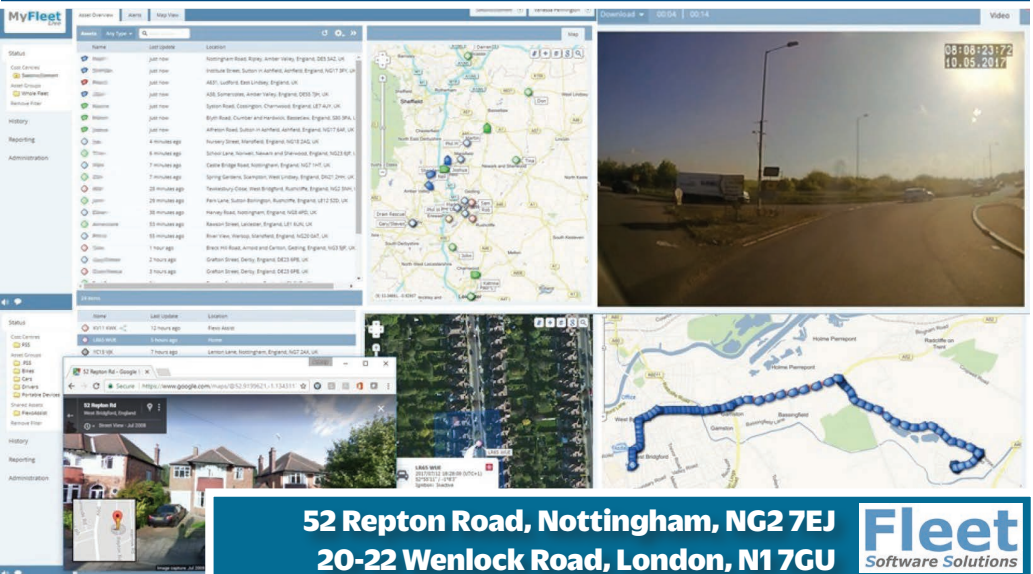
As new technologies emerge, we simply integrate them to the system ensuring we **always have the widest range of devices (for all budgets)** and you never need switch software providers ever again.

You may be able to **transfer your existing devices** to MyFleet Live without any vehicle downtime or engineer visit if you own the devices. Please contact us with details of your current supplier so we can advise if this is an option.

We **install anywhere in the UK and Europe** and/or **train you how to install.**

If you've got any questions about any of the above or initially just want some honest, free advice, **call Antony on 07850 439 260**

Or for more information please visit **www.fleetsoftwaresolutions.co.uk**
t: **0800 010 6616** e: **info@fleetsoftwaresolutions.co.uk**



The screenshot displays the MyFleet Live software interface. On the left, there is a navigation menu with categories like Status, Cost Control, Reporting, and Administration. The main area is divided into three sections: a table of vehicles, a map, and a live camera feed. The vehicle table lists various assets with columns for Name, Last Update, and Location. The map shows the locations of these vehicles plotted on a street map. The live camera feed shows a real-time view from a vehicle-mounted camera, displaying a timestamp of 08:08:23 on 10.05.2017. At the bottom, there are additional smaller windows showing a Google Maps search for a location and a thumbnail of a residential street.

52 Repton Road, Nottingham, NG2 7EJ
20-22 Wenlock Road, London, N1 7GU

Fleet
Software Solutions